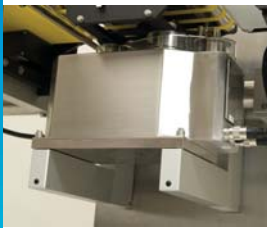


Powerful performance, unmatched flexibility



EMFR weigh cell

METTLER TOLEDO Electro Magnetic Force Restoration weighing technology for high accuracy weighing.



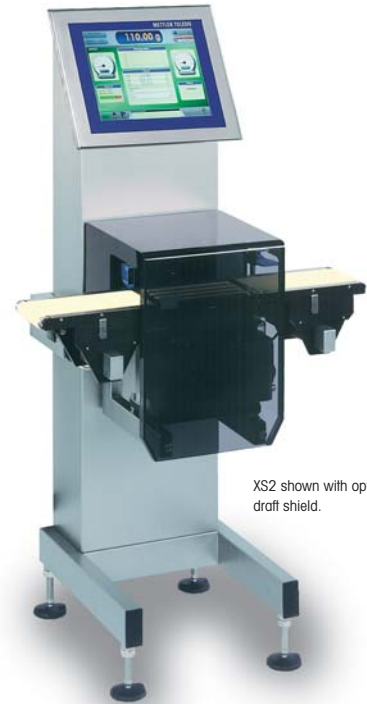
No tools

No tools required to remove conveyors for inspection, cleaning, or belt replacement.



Color touch screen

Large 15" display for best visibility and easy operation. Dashboard style configuration presents all pertinent information at a glance.



XS2 shown with optional draft shield.

Security and flexibility, the XS2 delivers proven performance for up to 600 gram packages.

The XS2 delivers the performance, flexibility, and innovation that is the hallmark of all HI-SPEED products. From the user friendly 15" color touch screen display with the ability to create security for groups and individuals to advanced data and machine connectivity the XS2 is the right checkweigher for many applications.

Technical data

XS2

- setting the standard for accuracy and flexibility

The HI-SPEED XS2 combines a broad array of conveyor sizes with METTLER TOLEDO Electro Magnetic Force Restoration weigh cell technology to deliver unparalleled checkweighing performance for a wide variety of applications. The large 15" user interface displays all pertinent information at a glance.

The standard design includes line height adjustment, reversible travel direction, and continuous belt speed control. The modular construction enables easy maintenance and protects the value of the XS2 by its ability to add options and functionality once installed.

The XS2 is suitable for weighing products up to 600 grams with production rates up to 400 packages per minute making it suitable for a wide range of products and applications.

Standard features

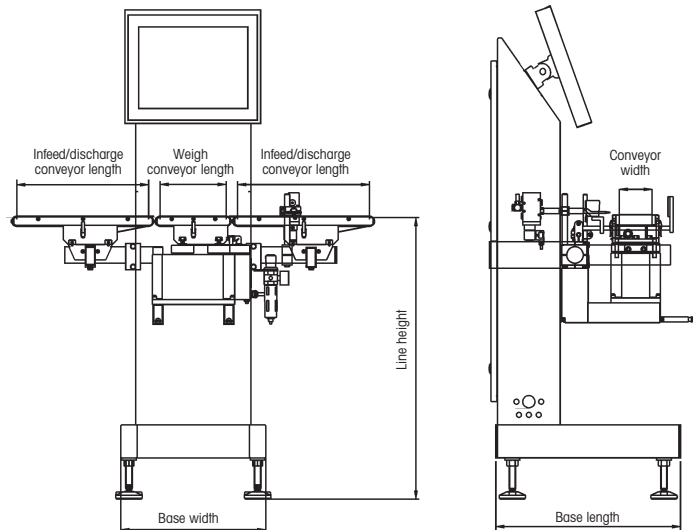
- Stainless steel and aluminum construction
- 3 or 5 weight zone classification
- Multiple language capability
- Password protected multi-level user security with programmable user types and individual access profiles
- Compact design integrates easily into product lines
- IP54 ingress protection

Weighing controller

- Bright, high contrast 15" color touch screen display
- Informative main display featuring 23 separate fields for 'at a glance' monitoring of production information
- Industrial PC with embedded Windows XP operating system
- "One touch" full screen current weight display
- Intuitive menu driven navigation
- 200 product memory

Options and accessories

- Single head filler feedback control for optimizing fill processes
- Up to 7 zone weight classification
- Statistics program
- 400 product memory
- PrintStick portable memory device or printer for the data output
- Network interface for METTLER TOLEDO FreeWeigh SQC system
- Various monitoring and detection devices, e.g. open flap detection
- Choice of serial interfaces for weight transmission
- Range of reject devices, e.g. air blast, sweep, and lift-up rejecters
- IP65 ingress protection
- Package transfer and handling mechanisms include sidegrips, guide rails, timing screw, starwheel, or mechanical transfer unit
- Draft shield and reject bins
- Portability
- Metal detector input and combination systems
- Fieldbus interfaces for DeviceNet, ControlNet, EtherNet/IP, Modbus TCP, and Profibus



XS2 typical schematic

Technical data	XS2																									
Weighing range, specific to article weight*	Maximum capacity 600 g																									
Accuracy**	From ± 50 mg																									
Throughput (weighings/minute)**	Maximum 400																									
Line height	550 – 1100 mm \pm 30 mm																									
Base width	440 mm																									
Base length	560 mm																									
Roller diameter	29 mm																									
Standard sorting/rejecting device	Air blast																									
Compressed air supply	60 to 115 psi																									
Power	115/230 VAC, 50/60 Hz, single phase, \geq 500 VA																									
Weighing conveyor belt (mm)	<table border="1"> <thead> <tr> <th></th> <th colspan="4">Width</th> </tr> <tr> <th></th> <th>100</th> <th>120</th> <th>150</th> <th>200</th> </tr> </thead> <tbody> <tr> <td>Length 200</td> <td>◆</td> <td>◆</td> <td>◆</td> <td>N/A</td> </tr> <tr> <td>250</td> <td>◆</td> <td>◆</td> <td>◆</td> <td>◆</td> </tr> <tr> <td>300</td> <td>◆◆</td> <td>◆◆</td> <td>◆◆</td> <td>◆◆</td> </tr> </tbody> </table>		Width					100	120	150	200	Length 200	◆	◆	◆	N/A	250	◆	◆	◆	◆	300	◆◆	◆◆	◆◆	◆◆
	Width																									
	100	120	150	200																						
Length 200	◆	◆	◆	N/A																						
250	◆	◆	◆	◆																						
300	◆◆	◆◆	◆◆	◆◆																						
Infeed/discharge conveyor belt (mm)	<table border="1"> <thead> <tr> <th></th> <th colspan="4">Width</th> </tr> <tr> <th></th> <th>100</th> <th>120</th> <th>150</th> <th>200</th> </tr> </thead> <tbody> <tr> <td>Length 250</td> <td>◆</td> <td>◆</td> <td>◆</td> <td>◆</td> </tr> <tr> <td>400</td> <td>◆</td> <td>◆</td> <td>◆</td> <td>◆</td> </tr> <tr> <td>600</td> <td>◆◆</td> <td>◆◆</td> <td>◆◆</td> <td>◆◆</td> </tr> </tbody> </table>		Width					100	120	150	200	Length 250	◆	◆	◆	◆	400	◆	◆	◆	◆	600	◆◆	◆◆	◆◆	◆◆
	Width																									
	100	120	150	200																						
Length 250	◆	◆	◆	◆																						
400	◆	◆	◆	◆																						
600	◆◆	◆◆	◆◆	◆◆																						

- ◆ Standard
- ◆◆ Optional
- N/A Not Available

* Depends on the design and dimensions of the weighing belt used

** Depends on the weight, dimensions, and transport of the product to be weighed



Mettler-Toledo Hi-Speed, Inc.
5 Barr Road, Ithaca, NY 14850

Toll Free: 800-836-0836
Tel: 607-257-6000
Fax: 607-257-6396
e-mail: hi-speed@mf.com

Subject to technical changes
©2006 Mettler-Toledo Hi-Speed, Inc.
Printed in U.S.A.

6J-01C-0076A

www.mt.com/hi-speed

For more information